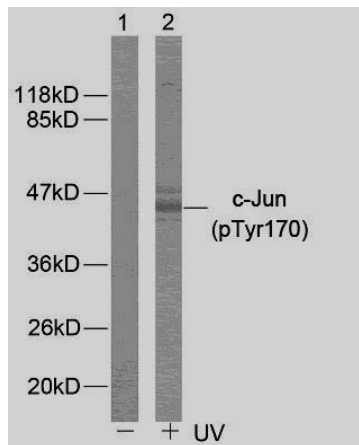


Rabbit anti c-Jun (pTyr170)

- Catalog Number:** pAP11023
Amount: 100µl (for 10 Western Blotting)
Form of Antibody: Rabbit IgG in phosphate buffered saline (without Mg²⁺ and Ca²⁺), pH 7.4, 150mM NaCl, 0.02% sodium azide and 50% glycerol.
Storage/Stability: Store at -20°C/1 year
Immunogen: The antiserum was produced against synthesized phosphopeptide derived from human c-Jun around the phosphorylation site of tyrosine 170 (P-V-Y^P-A-N).
Purification: The antibody was affinity-purified from rabbit antiserum by affinity-chromatography using epitope-specific phosphopeptide. The antibody against non-phosphopeptide was removed by chromatography using non-phosphopeptide corresponding to the phosphorylation site.
Specificity/Sensitivity: c-Jun (phospho-Tyr170) antibody detects endogenous levels of c-Jun only when phosphorylated at tyrosine 170.
Reactivity: Human, Mouse, Rat
Applications: WB: 1:500~1:1000
Swiss-Prot No. : P05412
References: Barila D, et al. (2000) EMBO J.19(2): 273-281.
Binetruy B, et al. (1991) Nature. 351: 122-127.
Smeal T, et al. (1991) Nature. 354:494-496.
Derijard B, et al. (1994) Cell. 76:1025-1037.
Kyriakis J M, et al. (1994) Nature. 369: 156-160.



Western blot analysis of extracts from HeLa cells using c-Jun (phospho-Tyr170) antibody (pAP11023).

For Research Use Only

Contact & Ordering Information: Angio-Proteomie, 11 Park Drive, Suite 12, Boston, MA 02215, USA. Fax: (480) 247-4337, angioproteomie@gmail.com