

## Rabbit anti AKT (pSer473)

**Catalog Number:** pAP11054

**Amount:** 100µl (for 10 Western Blotting)

**Form of Antibody:** Rabbit IgG in phosphate buffered saline (without Mg<sup>2+</sup> and Ca<sup>2+</sup>), pH 7.4, 150mM NaCl, 0.02% sodium azide and 50% glycerol.

**Storage/Stability:** Store at -20°C/1 year

**Immunogen:** The antiserum was produced against synthesized phosphopeptide derived from human Akt around the phosphorylation site of serine 473 (Q-F-S<sup>P</sup>-Y-S).

**Purification:** The antibody was affinity-purified from rabbit antiserum by affinity-chromatography using epitope-specific phosphopeptide. The antibody against non-phosphopeptide was removed by chromatography using non-phosphopeptide corresponding to the phosphorylation site.

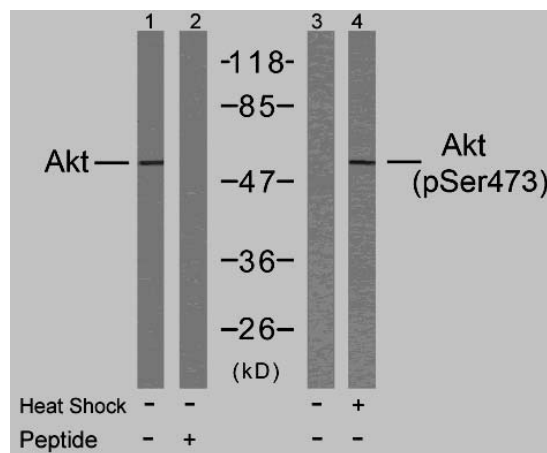
**Specificity/Sensitivity:** Akt (phospho-Ser473) antibody detects endogenous levels of Akt only when phosphorylated at serine 473.

**Reactivity:** Human, Mouse, Rat

**Applications:** WB: 1:1000

**Swiss-Prot No. :** P31749

**References:** Baudhuin LM, et al. (2004) FASEB J Feb; 18(2): 341-3.  
Min YH, et al. (2004) Cancer Res; 64(15): 5225-31.  
Feng J, et al. (2004) J Biol Chem; 279(34): 35510-7.



Western blot analysis of extract from HeLa cells untreated or treated with heat shock using Akt (Ab-473) antibody (AP21054, Lane 1 and 2) and Akt (phospho-Ser473) antibody (pAP11054, Lane 3 and 4).

**For Research Use Only**

Contact & Ordering Information: Angio-Proteomie, 11 Park Drive, Suite 12, Boston, MA 02215, USA. Fax: (480) 247-4337, [angioproteomie@gmail.com](mailto:angioproteomie@gmail.com)