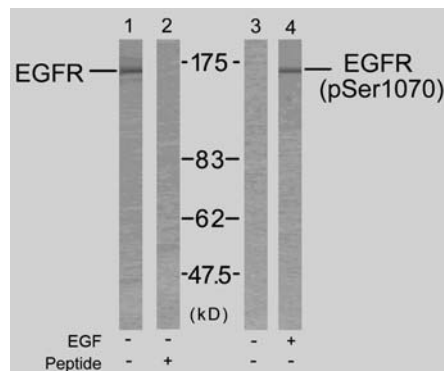


## Rabbit anti EGFR (pSer1070)

- Catalog Number:** pAP11080  
**Amount:** 100µl (for 10 Western Blotting)  
**Form of Antibody:** Rabbit IgG in phosphate buffered saline (without Mg<sup>2+</sup> and Ca<sup>2+</sup>), pH 7.4, 150mM NaCl, 0.02% sodium azide and 50% glycerol.  
**Storage/Stability:** Store at -20°C/1 year  
**Immunogen:** The antiserum was produced against synthesized phosphopeptide derived from human EGFR around the phosphorylation site of serine 1070 (R-Y-S<sup>P</sup>-S-D).  
**Purification:** The antibody was affinity-purified from rabbit antiserum by affinity-chromatography using epitope-specific phosphopeptide. The antibody against non-phosphopeptide was removed by chromatography using non-phosphopeptide corresponding to the phosphorylation site.  
**Specificity/Sensitivity:** EGFR (phospho-Ser1070) antibody detects endogenous levels of EGFR only when phosphorylated at serine1070.  
**Reactivity:** Human, Mouse, Rat  
**Applications:** WB: 1:1000  
**Swiss-Prot No. :** P00533  
**References:** Feinmesser RL, et al. (1999) J Biol Chem; 274(23): 16168-73.  
Gamou S, et al. (1995) FEBS Lett; 357(2): 161-4.  
Gamou S, et al. (1994) J Cell Physiol; 158(1): 151-9.  
Heisermann GJ, et al. (1988) J Biol Chem; 263(26): 13152-8.



Western blot analysis of extract from SK-OV3 cells untreated or treated with EGF using EGFR (Ab-1070) antibody (AP21073, Lane 1 and 2) and EGFR (phospho- Ser1070) antibody (pAP11080, Lane 3 and 4).

**For Research Use Only**

Contact & Ordering Information: Angio-Proteomie, 11 Park Drive, Suite 12, Boston, MA 02215, USA. Fax: (480) 247-4337, [angioproteomie@gmail.com](mailto:angioproteomie@gmail.com)