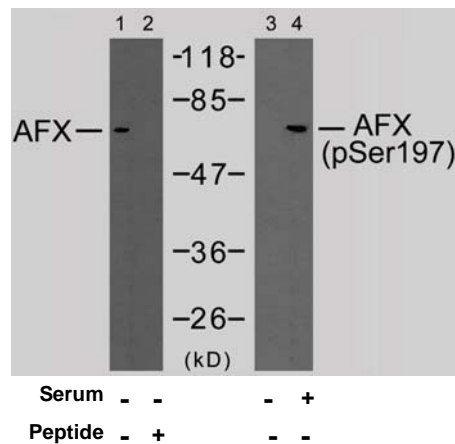


Rabbit anti AFX (pSer197)

- Catalog Number:** pAP11137
Amount: 100µl (for 10 Western Blotting)
Form of Antibody: Rabbit IgG in phosphate buffered saline (without Mg²⁺ and Ca²⁺), pH 7.4, 150mM NaCl, 0.02% sodium azide and 50% glycerol.
Storage/Stability: Store at -20°C/1 year
Immunogen: The antiserum was produced against synthesized phosphopeptide derived from human AFX around the phosphorylation site of serine 197 (A-A-S^P-M-D).
Purification: The antibody was affinity-purified from rabbit antiserum by affinity-chromatography using epitope-specific phosphopeptide. The antibody against non-phosphopeptide was removed by chromatography using non-phosphopeptide corresponding to the phosphorylation site.
Specificity/Sensitivity: AFX (phospho-Ser197) antibody detects endogenous levels of AFX only when phosphorylated at serine 197.
Reactivity: Human, Mouse, Rat
Applications: WB: 1:1000
Swiss-Prot No.: P98177
References: Di Maira G, et al. (2005) Cell Death Differ; 12(6): 668-77.
 Essers MA, et al. EMBO J 2004 Nov. 11.
 Brownawell AM, (2001) Mol Cell Biol; 21(10): 3534-46.
 Kops GJ, et al. (1999) Nature; 398(6728): 630-4.



Western blot analysis of extracts from 293 cells using AFX (Ab-197) antibody (AP21162, Lane 1 and 2) and AFX (phospho-Ser197) antibody (pAP11137, Lane 3 and 4).

For Research Use Only

Contact & Ordering Information: Angio-Proteomie, 11 Park Drive, Suite 12, Boston, MA 02215, USA. Fax: (480) 247-4337, angioproteomie@gmail.com