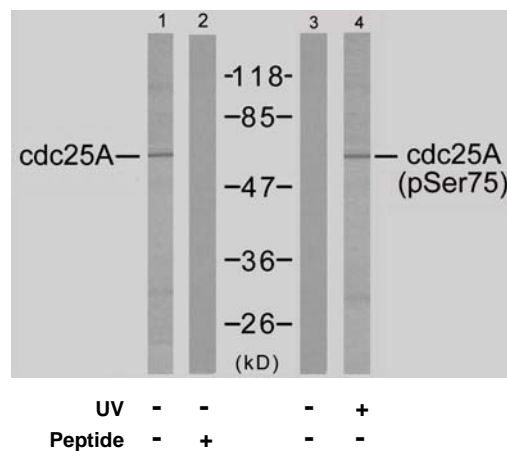


Rabbit anti CDC25A (pSer75)

- Catalog Number:** pAP11138
Amount: 100µl (for 10 Western Blotting)
Form of Antibody: Rabbit IgG in phosphate buffered saline (without Mg²⁺ and Ca²⁺), pH 7.4, 150mM NaCl, 0.02% sodium azide and 50% glycerol.
Storage/Stability: Store at -20°C/1 year
Immunogen: The antiserum was produced against synthesized phosphopeptide derived from human cdc25A around the phosphorylation site of serine 75 (M-G-S^P-S-E).
Purification: The antibody was affinity-purified from rabbit antiserum by affinity-chromatography using epitope-specific phosphopeptide. The antibody against non-phosphopeptide was removed by chromatography using non-phosphopeptide corresponding to the phosphorylation site.
Specificity/Sensitivity: cdc25A (phospho-Ser75) antibody detects endogenous levels of cdc25A only when phosphorylated at serine 75.
Reactivity: Human, Mouse, Rat
Applications: WB: 1:1000
Swiss-Prot No. : P30304
References: Jin J, et al. (2003) Genes 17(24): 3062-74.
Shimuta K, et al. (2002) EMBO J 21(14): 3694-703.



Western blot analysis of extracts from A2780 cells using cdc25A (Ab-75) antibody (AP21163, Lane 1 and 2) and cdc25A (phospho-Ser75) antibody (pAP11138, Lane 3 and 4)

For Research Use Only

Contact & Ordering Information: Angio-Proteomie, 11 Park Drive, Suite 12, Boston, MA 02215, USA. Fax: (480) 247-4337, angioproteomie@gmail.com