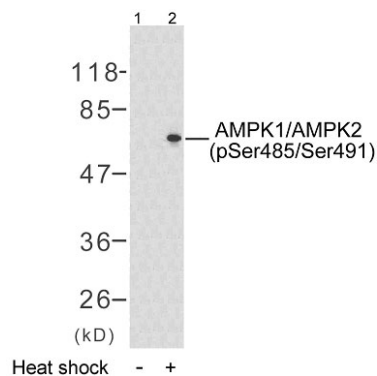


## Rabbit anti AMPK1/AMPK2 (pSer485/pSer491)

- Catalog Number:** pAP11174  
**Amount:** 100µl (for 10 Western Blotting)  
**Form of Antibody:** Rabbit IgG in phosphate buffered saline (without Mg<sup>2+</sup> and Ca<sup>2+</sup>), pH 7.4, 150mM NaCl, 0.02% sodium azide and 50% glycerol.  
**Storage/Stability:** Store at -20°C/1 year  
**Immunogen:** The antiserum was produced against synthesized phosphopeptide derived from human AMPK1/AMPK2 around the phosphorylation site of serine 485/491 (S-G- S<sup>P</sup>-V-S).  
**Purification:** The antibody was affinity-purified from rabbit antiserum by affinity-chromatography using epitope-specific phosphopeptide. The antibody against non-phosphopeptide was removed by chromatography using non-phosphopeptide corresponding to the phosphorylation site.  
**Specificity/Sensitivity:** AMPK1/AMPK2 (phospho-Ser485/Ser491) antibody detects endogenous levels of AMPK1/AMPK2 only when phosphorylated at serine 485 or serine 491.  
**Reactivity:** Human, Mouse, Rat  
**Applications:** WB: 1:1000  
**Swiss-Prot No.:** Q13131 P54646  
**References:** Kim JE, et al. (2005) J Proteome Res. 4(4): 1339-1346.  
Woods A, et al. (2003) J Biol Chem. 278(31): 28434-28442.



Western blot analysis of extract from HeLa cells untreated or treated with heat shock (30min), using AMPK1/AMPK2 (phospho-Ser485/Ser491) antibody (pAP11174).

**For Research Use Only**

Contact & Ordering Information: Angio-Proteomie, 11 Park Drive, Suite 12, Boston, MA 02215, USA. Fax: (480) 247-4337, [angioproteomie@gmail.com](mailto:angioproteomie@gmail.com)