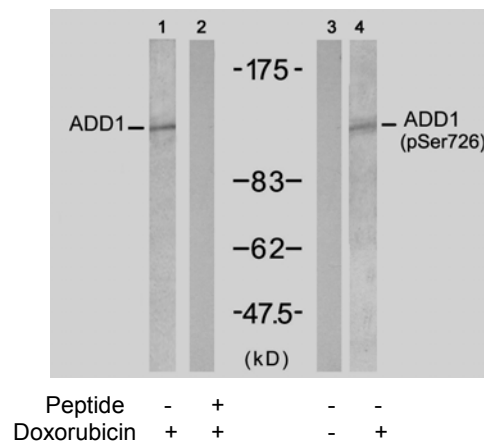


Rabbit anti ADD1 (pSer726)

- Catalog Number:** pAP11182
Amount: 100µl (for 10 Western Blotting)
Swiss-Prot No. : P35611
Form of Antibody: Rabbit IgG in phosphate buffered saline (without Mg²⁺ and Ca²⁺), pH 7.4, 150mM NaCl, 0.02% sodium azide and 50% glycerol.
Storage/Stability: Store at -20°C/1 year
Immunogen: The antiserum was produced against synthesized phosphopeptide derived from human ADD1 around the phosphorylation site of serine 726 (T-P-S^P-F-L).
Purification: The antibody was affinity-purified from rabbit antiserum by affinity-chromatography using epitope-specific phosphopeptide. The antibody against non-phosphopeptide was removed by chromatography using non-phosphopeptide corresponding to the phosphorylation site.
Specificity/Sensitivity: ADD1 (Phospho-Ser726) antibody detects endogenous levels of ADD1 only when phosphorylated at serine 726.
Reactivity: Human, Mouse, Rat
Applications: WB: 1:1000
References: Pariser H, et al. Proc Natl Acad Sci USA 2005 Aug 30; 102(35): 12407-12
Tamaru S, et al. Biochem Biophys Res Commun 2005 Jul 01; 332(2): 347-51
Barkalow KL, et al. J Cell Biol 2003 May 12; 161(3): 557-70



Western blot analysis of extract from HT-29 cells untreated or treated with Doxorubicin (1mM, 30min), using ADD1 (Ab-726) antibody (AP21189, Lane 1 and 2) and ADD1 (Phospho- Ser726) antibody (pAP11182, Lane 3 and 4).

For Research Use Only

Contact & Ordering Information: Angio-Proteomie, 11 Park Drive, Suite 12, Boston, MA 02215, USA. Fax: (480) 247-4337, angioproteomie@gmail.com