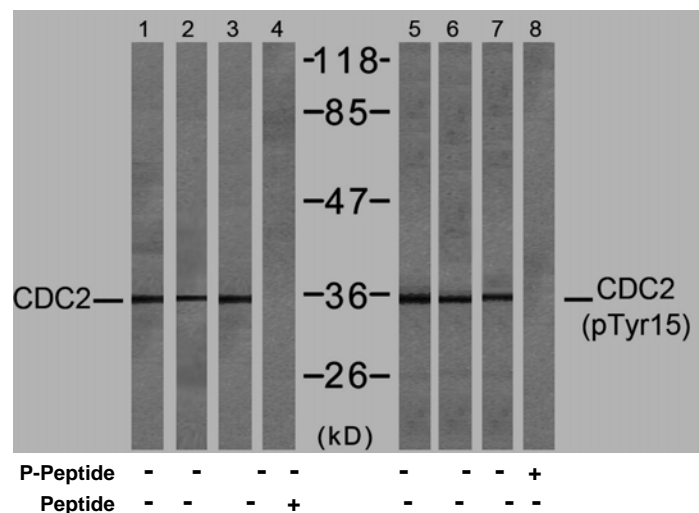


Rabbit anti CDC2 (pTyr15)

- Catalog Number:** pAP11244
Amount: 100µl (for 10 Western Blotting)
Swiss-Prot No. : P06493
Form of Antibody: Rabbit IgG in phosphate buffered saline (without Mg²⁺ and Ca²⁺), pH 7.4, 150mM NaCl, 0.02% sodium azide and 50% glycerol.
Storage/Stability: Store at -20°C/1 year
Immunogen: The antiserum was produced against synthesized phosphopeptide derived from human CDC2 around the phosphorylation site of tyrosine 15 (G-T-Y^P-G-V).
Purification: The antibody was affinity-purified from rabbit antiserum by affinity-chromatography using epitope-specific phosphopeptide. The antibody against non-phosphopeptide was removed by chromatography using non-phosphopeptide corresponding to the phosphorylation site.
Specificity/Sensitivity: CDC2 (phospho-Tyr15) antibody detects endogenous levels of CDC2 only when phosphorylated at tyrosine 15.
Reactivity: Human, Mouse, Rat
Applications: WB: 1:1000
References: Y Gu, et al. (1992) EMBO J. 11(11): 3995–4005.
P Jin, et al. (1996) Cell Biology, Vol 134: 963-970,
Tyagi, et al. (2005) Alpha1Carcinogenesis, Volume 26: 1978-1987(10)
Xiang S. et al. (1997) The EMBO Journal 16: 182–192



Western blot analysis of extracts from COLO (Lane 1, 5) and HepG2 (Lane 2, 6) and K562 (Lane 3, 4, 7, 8) cells, using CDC2 (Ab-15) antibody (AP21236, Lane 1, 2, 3 and 4) and CDC2 (phospho-Tyr15) antibody (pAP11244, Lane 5, 6, 7 and 8).

For Research Use Only

Contact & Ordering Information: Angio-Proteomie, 11 Park Drive, Suite 12, Boston, MA 02215, USA. Fax: (480) 247-4337, angioproteomie@gmail.com