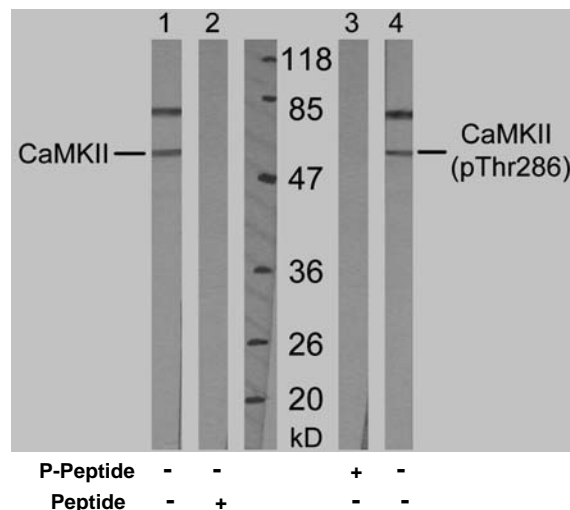


## Rabbit anti CaMKII (pThr286)

- Catalog Number:** AP11287  
**Amount:** 100µl (for 10 Western Blotting)  
**Swiss-Prot No. :** Q9UQM7  
**Form of Antibody:** Rabbit IgG in phosphate buffered saline (without Mg<sup>2+</sup> and Ca<sup>2+</sup>), pH 7.4, 150mM NaCl, 0.02% sodium azide and 50% glycerol.  
**Storage/Stability:** Store at -20°C/1 year  
**Immunogen:** The antiserum was produced against synthesized phosphopeptide derived from human CaMKII around the phosphorylation site of threonine 286 (Q-E-T<sup>P</sup>-V-D).  
**Purification:** The antibody was affinity-purified from rabbit antiserum by affinity-chromatography using epitope-specific phosphopeptide. The antibody against non-phosphopeptide was removed by chromatography using non-phosphopeptide corresponding to the phosphorylation site.  
**Specificity/Sensitivity:** CaMKII (phospho-Thr286) antibody detects endogenous levels of CaMKII only when phosphorylated at threonine 286.  
**Reactivity:** Human, Mouse, Rat  
**Applications:** WB: 1:1000  
**References:** Pak JH, et al. Proc Natl Acad Sci U S A. 2000 Oct 10; 97(21): 11232-11237  
Hudmon A, et al. J Cell Biol. Author manuscript; available in PMC 2006 May 7  
Miller P, et al. PLoS Biol. 2005 Apr; 3(4): e107  
Runyan JD, et al. Learn Mem. 2005 Mar; 12(2): 103-110.



Western blot analysis of extract from Mouse brain tissue, using CaMKII (Ab-286) antibody (AP21279, Lane 1 and 2) and CaMKII (phospho-Thr286) antibody (pAP11287, Lane 3 and 4).

**For Research Use Only**

Contact & Ordering Information: Angio-Proteomie, 11 Park Drive, Suite 12, Boston, MA 02215, USA. Fax: (480) 247-4337, [angioproteomie@gmail.com](mailto:angioproteomie@gmail.com)