

Rabbit anti CARM1 (pSer228) Antibody

Catalog Number: pAP11331

Amount: 100µl (for 10 Western Blotting)

Swiss-Prot No. : Q86X55

Form of Antibody: Rabbit IgG in phosphate buffered saline (without Mg²⁺ and Ca²⁺), pH 7.4, 150mM NaCl, 0.02% sodium azide and 50% glycerol.

Storage/Stability: Store at -20°C/1 year

Immunogen: The antiserum was produced against synthesized phosphopeptide derived from human CARM1 around the phosphorylation site of serine 228 (V-K-S^P-N-N).

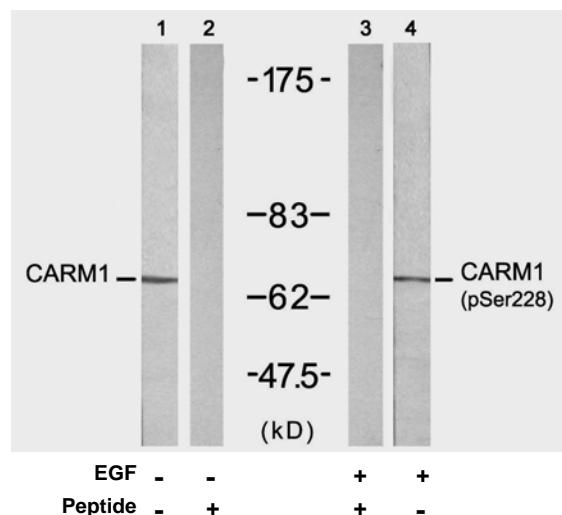
Purification: The antibody was affinity-purified from rabbit antiserum by affinity-chromatography using epitope-specific phosphopeptide. The antibody against non-phosphopeptide was removed by chromatography using non-phosphopeptide corresponding to the phosphorylation site.

Specificity/Sensitivity: CARM1 (Phospho-Ser228) antibody detects endogenous levels of CARM1 only when phosphorylated at serine 228.

Reactivity: Human, Mouse, Rat

Applications: WB: 1: 1000

References: Selma El Messaoudi, et al. (2006) Proc Natl Acad Sci U S A; 103(36): 13351–13356.
Marcela Covic, et al. (2005) EMBO J; 24(1): 85–96.
Eleni Zika et al. (2005) Proc Natl Acad Sci U S A.; 102(45): 16321–16326
Neelu Yadav et al. (2003) Proc Natl Acad Sci U S A; 100(11): 6464–6468



Western blot analysis of extracts from A431 cells untreated or treated with EGF (200ng/ml, 5min), using CARM1 (Ab-228) antibody (pAP21331, Line 1 and 2) and CARM1 (Phospho-Ser228) antibody (pAP11331, Line 3 and 4).

For Research Use Only

Contact & Ordering Information: Angio-Proteomie, 11 Park Drive, Suite 12, Boston, MA 02215, USA. Fax: (480) 247-4337, angioproteomie@gmail.com