

Rabbit anti-human GSK3 α (phospho-ser21)

ORDERING INFORMATION

Catalog Number:	pAP-0004
Size:	50μg/50μl
Storage:	-20$^{\circ}$C
Ig Type:	Antigen purified Rabbit IgG
Applications:	WB, IHC

Preparation This antibody is prepared by immunizing rabbit with synthesized phosphopeptide derived from human GSK3 α around the phosphorylation site of serine 21 (T-S-S^P-F-A, **Swiss-Prot No:** P49840). The antibody is affinity-purified from rabbit antiserum by affinity-chromatography using epitope-specific phosphopeptide. The antibody against non-phosphopeptide was removed by chromatography using non-phosphopeptide corresponding to the phosphorylation site.

Formulation and storage Rabbit IgG in phosphate buffered saline (without Mg²⁺ and Ca²⁺), pH 7.4, 150mM NaCl, 0.02% sodium azide and 50% glycerol.

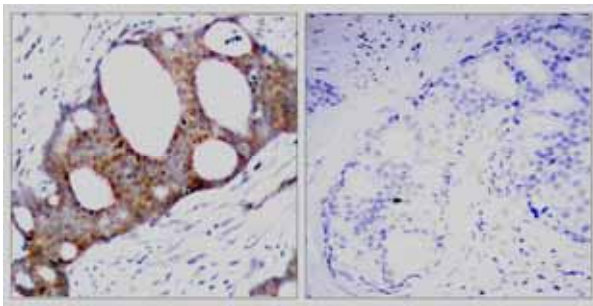
Storage/Stability: Store at -20 for at least 1 year

Specificity/Sensitivity: GSK3 α (phospho-Ser21) antibody detects endogenous levels of GSK3 α only when phosphorylated at serine 21.

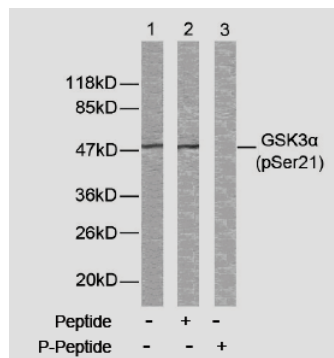
Reactivity: Human, Mouse, Rat

Applications: WB: 1:500-1:1000 IHC: 1:50-1:100

References: Barry FA, et al. (2003) FEBS Lett. 553(1-2): 173-178. Koivisto L, et al. (2003) J Cell Sci. 116(Pt 18): 3749-3760. Welsh G I, et al. (1996) Trends Cell Biol. 6:274-279. Srivastava A K, et al. (1998) Mol. Cell. Biochem. 182: 135-141.



Immunohistochemical analysis of paraffin-embedded human breast carcinoma tissue using GSK3 α (phospho-Ser21) antibody.



Western blot analysis of extracts from ovary cancer cells using GSK3 α (phospho-Ser21) antibody.

Contact & Ordering Information: Angio-Proteomie, 11 Park Drive, Suite 12, Boston, MA 02215, USA. Fax: (480) 247-4337, angioproteomie@gmail.com