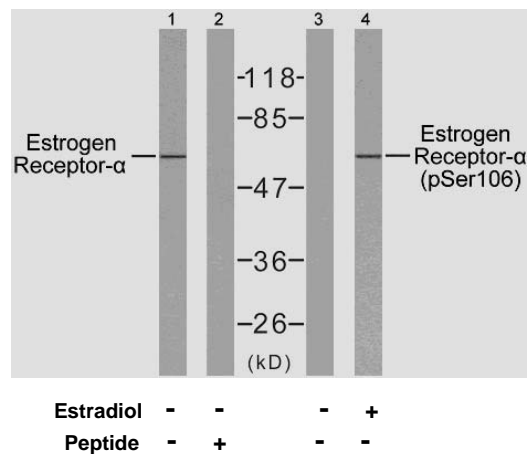


Rabbit anti Estrogen Receptor- α (Ab-106)

- Catalog Number:** AP21066
Amount: 100 μ l (for 10 Western Blotting)
Form of Antibody: Rabbit IgG in phosphate buffered saline (without Mg²⁺ and Ca²⁺), pH 7.4, 150mM NaCl, 0.02% sodium azide and 50% glycerol.
Storage/Stability: Store at -20°C/1 year
Immunogen: The antiserum was produced against synthesized non-phosphopeptide derived from human Estrogen Receptor- α around the phosphorylation site of serine 106 (S-P- S^P-P-L).
Purification: The antibody was affinity-purified from rabbit antiserum by affinity-chromatography using epitope-specific immunogen.
Specificity/Sensitivity: Estrogen Receptor- α (Ab-106) antibody detects endogenous levels of total Estrogen Receptor- α protein.
Reactivity: Human, Mouse
Applications: WB: 1:1000
Swiss-Prot No. : P03372
References: Medunjanin S, et al. (2005). J Biol Chem.80 (38):33006-33014.
 Dutertre M, et al. (2003). Mol Endocrinol.17 (7): 1296-1314.
 Chen D, et al. (2000). Mol Cell.6 (1): 127-137.
 Rogatsky I, et al. (1999). J Biol Chem.274 (32): 22296-22302.



Western blot analysis of extracts from MCF7 cells, using Estrogen Receptor- α (Ab-106) antibody (AP21066) and Estrogen Receptor- α (phospho-Ser106) antibody (pAP11071)

For Research Use Only

Contact & Ordering Information: Angio-Proteomie, 11 Park Drive, Suite 12, Boston, MA 02215, USA. Fax: (480) 247-4337, angioproteomie@gmail.com