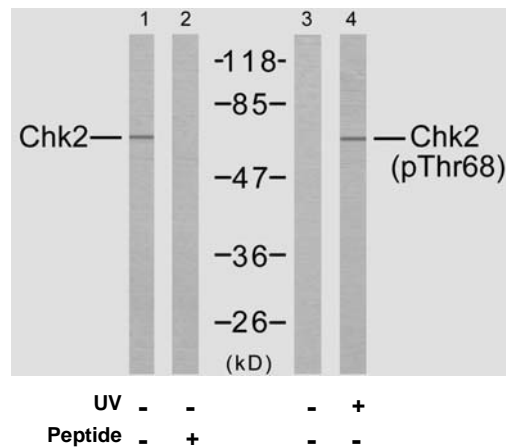




11 Park Drive, Suite 12  
Boston, MA 02215

## Rabbit anti CHK-2 (Ab-68)

- Catalog Number:** AP21087  
**Amount:** 100µl (for 10 Western Blotting)  
**Form of Antibody:** Rabbit IgG in phosphate buffered saline (without Mg<sup>2+</sup> and Ca<sup>2+</sup>), pH 7.4, 150mM NaCl, 0.02% sodium azide and 50% glycerol.  
**Storage/Stability:** Store at -20°C/1 year  
**Immunogen:** The antiserum was produced against synthesized non-phosphopeptide derived from human Chk2 around the phosphorylation site of threonine 68 (V-S-T<sup>P</sup>-Q-E).  
**Purification:** The antibody was affinity-purified from rabbit antiserum by affinity-chromatography using epitope-specific immunogen.  
**Specificity/Sensitivity:** Chk2 (Ab-68) antibody detects endogenous levels of total Chk2 protein.  
**Reactivity:** Human, Mouse, Rat  
**Applications:** WB: 1:1000  
**Swiss-Prot No. :** O96017  
**References:** Bhounik A, et al. (2005) Mol Cell; 18(5): 577-87.  
Gorgoulis VG, et al. (2005) Nature; 434(7035): 907-13.  
Falck J, et al. (2005) Nature; 434(7033): 605-11.  
Jin ZH, et al. (2005) Oncogene; 24(12): 1973-81.  
Li J, et al. (2005) J Biol Chem; 280(12): 12041-50.



Western blot analysis of extract from Jurkat cells, using Chk2 (Ab-68) antibody (AP21087, Lane 1 and 2) and Chk2 (phospho-Thr68) antibody (pAP11061, Lane 3 and 4).

**For Research Use Only**

Contact & Ordering Information: Angio-Proteomie, 11 Park Drive, Suite 12, Boston, MA 02215, USA. Fax: (480) 247-4337, [angioproteomie@gmail.com](mailto:angioproteomie@gmail.com)