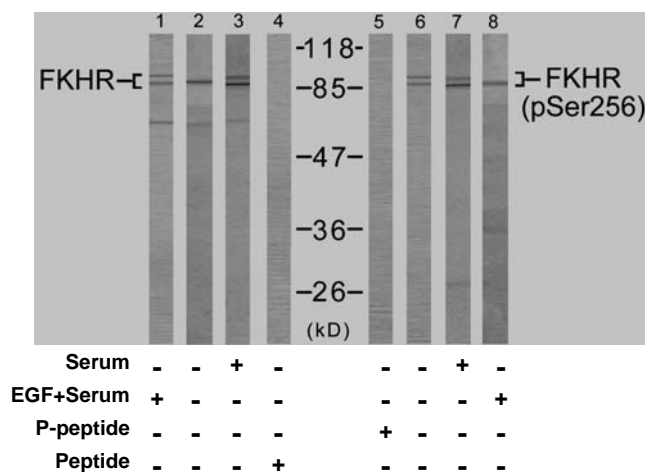


## Rabbit anti FKHR (Ab-256)

- Catalog Number:** AP21138  
**Amount:** 100µl (for 10 Western Blotting)  
**Form of Antibody:** Rabbit IgG in phosphate buffered saline (without Mg<sup>2+</sup> and Ca<sup>2+</sup>), pH 7.4, 150mM NaCl, 0.02% sodium azide and 50% glycerol.  
**Storage/Stability:** Store at -20°C/1 year  
**Immunogen:** The antiserum was produced against synthesized non-phosphopeptide derived from human FKHR around the phosphorylation site of serine 256 (A-A-S<sup>P</sup>-M-D).  
**Purification:** The antibody was affinity-purified from rabbit antiserum by affinity-chromatography using epitope-specific immunogen.  
**Specificity/Sensitivity:** FKHR (Ab-256) antibody detects endogenous levels of total FKHR protein.  
**Reactivity:** Human, Mouse, Rat  
**Applications:** WB: 1:1000  
**Swiss-Prot No. :** Q12778  
**References:** Gan L, et al. (2005) J Neurochem; 93(5): 1209-19.  
 Smith WW, et al. (2005) J Cell Biol; 169(2): 331-9.  
 Di Maira G, et al. (2005) Cell Death Differ; 12(6): 668-77.  
 Horn S, et al. (2004) Leukemia; 18(11): 1839-49.  
 Zhao X, et al. (2004) Biochem J 4; 378(Pt 3): 839-49.



Western blot analysis using FKHR (Ab-256) antibody (AP21138, Lane 1, 2, 3 and 4) and FKHR (phospho-Ser256) antibody (pAP11115, Lane 5, 6, 7 and 8).

**For Research Use Only**

Contact & Ordering Information: Angio-Proteomie, 11 Park Drive, Suite 12, Boston, MA 02215, USA. Fax: (480) 247-4337, [angioproteomie@gmail.com](mailto:angioproteomie@gmail.com)