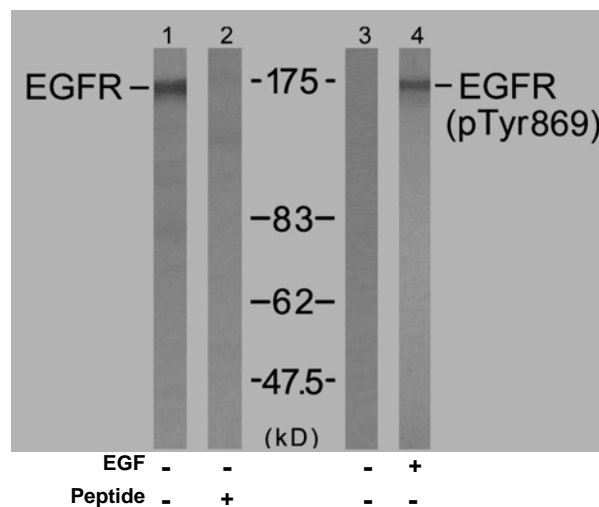




11 Park Drive, Suite 12
Boston, MA 02215

Rabbit anti EGFR (Ab-869)

- Catalog Number:** AP21222
Amount: 100µl (for 10 Western Blotting)
Swiss-Prot No. : P00533
Form of Antibody: Rabbit IgG in phosphate buffered saline (without Mg²⁺ and Ca²⁺), pH 7.4, 150mM NaCl, 0.02% sodium azide and 50% glycerol.
Storage/Stability: Store at -20°C/1 year
Immunogen: The antiserum was produced against synthesized non-phosphopeptide derived from human EGFR around the phosphorylation site of tyrosine 869 (K-E-Y^P-H-A).
Purification: The antibody was affinity-purified from rabbit antiserum by affinity-chromatography using epitope-specific immunogen.
Specificity/Sensitivity: EGFR (Ab-869) antibody detects endogenous levels of total EGFR protein.
Reactivity: Human, Mouse, Rat
Applications: WB: 1:1000
References: Gingras AC, et al. (1998) Genes Dev 12(4): 502-513.
Brugarolas J, et al. (2004) Genes Dev 18(23): 2893-2904.
Kumar V, et al. (2000) EMBO J 19(5): 1087-1097.
Moody CA, et al. (2005) J Virol 79(9): 5499-5506.
Burnett PE, et al. (1998) Proc Natl Acad Sci U S A 95(4): 1432-1437.



Western blot analysis of extract from A431 cells untreated or treated with EGF (200ng/ml, 5min), using EGFR (Ab-869) antibody (AP21222, Lane1 and 2) and EGFR (phospho-Tyr869) antibody (pAP11229, Lane 3 and 4).

For Research Use Only

Contact & Ordering Information: Angio-Proteomie, 11 Park Drive, Suite 12, Boston, MA 02215, USA. Fax: (480) 247-4337, angioproteomie@gmail.com