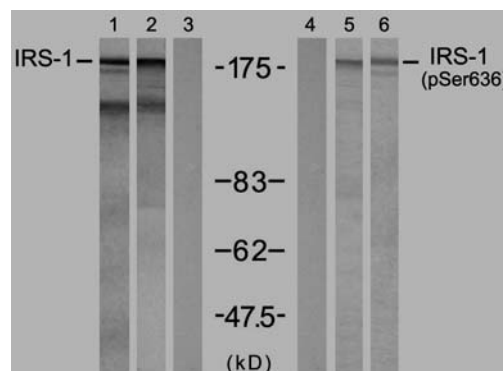


Rabbit anti IRS-1 (Ab-636)

- Catalog Number:** AP21223
Amount: 100µl (for 10 Western Blotting)
Swiss-Prot No. : P35568
Form of Antibody: Rabbit IgG in phosphate buffered saline (without Mg²⁺ and Ca²⁺), pH 7.4, 150mM NaCl, 0.02% sodium azide and 50% glycerol.
Storage/Stability: Store at -20°C/1 year
Immunogen: The antiserum was produced against synthesized non-phosphopeptide derived from human IRS-1 around the phosphorylation site of serine 636 (P-M-S^P-P-K).
Purification: The antibody was affinity-purified from rabbit antiserum by affinity-chromatography using epitope-specific immunogen.
Specificity/Sensitivity: IRS-1 (Ab-636) antibody detects endogenous levels of total IRS-1 protein.
Reactivity: Human, Mouse, Rat
Applications: WB: 1:1000
References: Ozes ON, et al. (2001) Proc Natl Acad Sci U S A; 98(8): 4640-4645
 Tzatsos A, et al. (2006) Mol Cell Biol; 26(1): 63-76
 Kadowaki T, et al. (2000) J Clin Invest; 106(4): 459-465
 Ozes ON, et al. (2001) Proc Natl Acad Sci U S A; 98(8): 4640-4645
 Szanto I, et al. (2000) Proc Natl Acad Sci U S A; 97(5): 2355-2360



Insulin	+	-	-	-	-	+
PMA	-	+	+	-	+	-
Peptide	-	-	+	-	-	-

Western blot analysis of extracts from 293 cells treated with insulin(100nM, 30min) or PMA (0.2µM, 15min) using IRS-1 (Ab-636) antibody (AP21223, Lane 1, 2 and 3) and IRS-1 (phospho-Ser636) antibody (pAP11230, Lane 4, 5 and 6).

For Research Use Only

Contact & Ordering Information: Angio-Proteomie, 11 Park Drive, Suite 12, Boston, MA 02215, USA. Fax: (480) 247-4337, angioproteomie@gmail.com