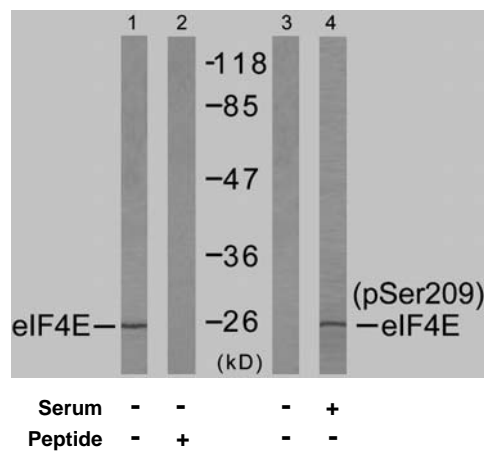




11 Park Drive, Suite 12  
Boston, MA 02215

## Rabbit anti eIF4E (Ab-209)

- Catalog Number:** AP21226  
**Amount:** 100µl (for 10 Western Blotting)  
**Swiss-Prot No. :** P06730  
**Form of Antibody:** Rabbit IgG in phosphate buffered saline (without Mg<sup>2+</sup> and Ca<sup>2+</sup>), pH 7.4, 150mM NaCl, 0.02% sodium azide and 50% glycerol.  
**Storage/Stability:** Store at -20°C/1 year  
**Immunogen:** The antiserum was produced against synthesized non-phosphopeptide derived from human eIF4E around the phosphorylation site of serine 209 (S-G-S<sup>P</sup>-T-T).  
**Purification:** The antibody was affinity-purified from rabbit antiserum by affinity-chromatography using epitope-specific immunogen.  
**Specificity/Sensitivity:** eIF4E (Ab-209) antibody detects endogenous levels of total eIF4E protein.  
**Reactivity:** Human, Mouse, Rat  
**Applications:** WB: 1:1000  
**References:** Li BD, et al. (1998) *Ann Surg*; 227(5): 756-763  
Altmann M, et al. (1989) *Nucleic Acids Res*; 17(18): 7520  
De Gregorio E, et al. (2001) *RNA*; 7(1): 106-113  
Gu W, et al. (2004) *Nucleic Acids Res*; 32(15): 4448-4461  
Ohlmann T, et al. (1996) *EMBO J*; 15(6): 1371-1382



Western blot analysis of extract from NIH/3T3 cells untreated or treated with 10% serum (15min), using eIF4E (Ab-209) antibody (AP21226, Line 1 and 2) and eIF4E (phospho-Ser209) antibody (pAP11233, Line 3 and 4).

**For Research Use Only**

Contact & Ordering Information: Angio-Proteomie, 11 Park Drive, Suite 12, Boston, MA 02215, USA. Fax: (480) 247-4337, [angioproteomie@gmail.com](mailto:angioproteomie@gmail.com)