

## Rat monoclonal anti-mouse Tie2 (agonistic)

### ORDERING INFORMATION

<b>Catalog No:</b>	<b>mT1002r-m</b>
<b>Size:</b>	<b>200 µg</b>
<b>Storage:</b>	<b>&lt; -20° C</b>
<b>Immunogen:</b>	<b>Mouse Tie2 extra-cellular domain</b>
<b>Ig Type:</b>	<b>Rat IgG2</b>
<b>Clone:</b>	<b>MAB1201</b>
<b>Applications:</b>	<b>WB and Activation of Tie2 in vitro and in vivo</b>

**Preparation:** This antibody was produced from a hybridoma (mouse myeloma fused with spleen cells from a rat immunized with purified mouse extracellular domain of Tie2 receptor).

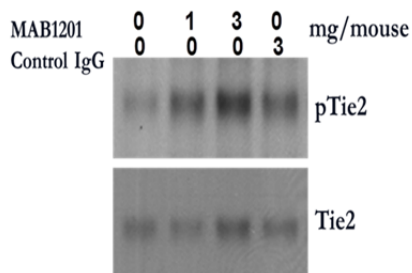
**Formulation and Storage:** The IgG fraction of culture supernatant was purified by Protein G affinity chromatography and lyophilized from a 0.2 µm filtered solution in phosphate-buffered saline (PBS). Lyophilized samples are stable for 2 years from date of receipt when stored at -70°C.

**Reconstitution:** Reconstitute the antibody with 500 µl sterile PBS and the final concentration is 400µg/ml. Reconstituted antibody can also be aliquoted and stored frozen at < -20 for at least for six months without detectable loss of activity. **Avoid repeated freeze-thaw cycles.**

**Specificity:** This antibody recognizes mouse Tie2 but not Tie1 in western blot. Cross reactivity to other species has not been tested!

#### Applications:

- Western blot** Yes (1:500-1000)
- Activation of Tie2 receptor** Yes



#### MAB1201 induced Tie2 activation in kidney in

both isotype control (IgG1) and MAB1201 IgG were injected (*i.p.*) at the doses indicated and total and phosphor-Tie2 were detected in kidney tissue 1 week after injection.

Final dilutions should be optimized by the end users and the dilutions provided in the data sheet are for reference only (For Research Use Only)