

JWH-250 (K2/Spice) Synthetic Cannabinoid ELISA Assay Kit

Catalog #4400-001 1 x 96 well plate

Kit Description:

The Tulip Biolabs JWH-250 (K2/Spice) Synthetic Cannabinoid ELISA Assay Kit is a 96-well microplate assay designed to test the presence of JWH-250 and its metabolites in samples such as urine, whole blood, serum, and plasma. Using the positive control compound JWH-250 N-4-hydroxypentyl metabolite standards, the limit of detection in urine is 5ng/mL. Total assay time is approximately 2 hours. This assay does not cross-react significantly with JWH-018, UR-144, or XLR-11.

Summary of the Procedure:

The Tulip Biolabs JWH-250 (K2/Spice) Synthetic Cannabinoid ELISA Assay Kit is based upon the competitive binding of JWH-250 and its metabolites in the test sample and JWH-250-conjugate (JWH-250 conjugated to horseradish peroxidase) to the anti- JWH-250-coated 96-well microplate. In the procedure, 20 μ L aliquots of test samples (blanks, calibrators, quality control samples, and/or diluted unknown samples) are simultaneously incubated with 100 μ L of JWH-250-conjugate in wells of a coated 96-well microplate. The wells are washed thoroughly with phosphate buffered saline, then TMB chromogenic substrate is added. A blue color is developed over 30 minutes at room temperature, and then stopped by the addition of dilute acid. The final yellow intensity of the wells is measured at OD450nm, and the absorbance is inversely proportional to the concentration of JWH-250 and its metabolites in the sample. The limit of detection is approximately 5ng/mL for JWH-250 N-4-hydroxypentyl metabolite.

Safety Warnings and Precautions:

This product is for research use only (RUO) and is not approved for therapeutic or diagnostic use.

All research reagents can be considered as being potentially hazardous. We therefore recommend that the contents of this kit be handled only by qualified laboratory personnel who have been trained in laboratory techniques and that it is used in accordance with the principles of good laboratory practice. Wear suitable protective clothing, safety glasses and gloves. Care should be taken to avoid contact with skin or eyes. In the case of contact with skin or eyes, wash immediately.

Materials Provided:

NOTE ON STORAGE: Store all components at 4°C. Place unused microwell strips back into the sealed pouch containing desiccant.

- JWH-250 ASSAY 96-WELL PLATE, 1 PLATE (cat. #K401)
- JWH-250 CONJUGATE, 13mL (cat. #K402)
- TMB SUBSTRATE, 13mL (cat. #K203)
- STOP SOLUTION (0.2N HCl), 13mL (cat. #K204) **CAUTION: MILDLY CAUSTIC SOLUTION! AVOID CONTACT WITH SKIN AND EYES! WASH AFFECTED AREAS IMMEDIATELY WITH WATER!**
- PHOSPHATE BUFFERED SALINE, 1 packet sufficient to make 1 x 1L (cat. #K205)

Additional Materials and Equipment Required but not Supplied:

- Calibrator standards (user supplied or available from Tulip Biolabs).
- Precision pipettes to deliver volumes of 20 and 100 μ L.
- Multi-tip or repeating pipettes to deliver 100 μ L and/or 325 μ L (optional).
- Automated microplate washer (optional) or absorbent paper (paper towels) for blotting.
- Microplate reader capable of reading OD450 nm.
- Phosphate buffered saline (20mM sodium phosphate, 150mM NaCl, pH 7.2-7.4) for sample dilution (only required if supplied packet is not of sufficient quantity).

Kit Storage and Stability:

The kit components are stable for at least 3 months from date of shipment when stored at 4°C. Place unused microwell strips back into the sealed pouch containing desiccant. Do not use components from different lot shipments. Note: Unopened phosphate buffered saline packet, #K205, is stable indefinitely and can be used with any kit lots.



Specimen Storage:

- Calibrator standards at -20 or -70°C (user supplied or available from Tulip Biolabs).
- Specimen and quality control samples (e.g.: urine, blood) at -20 or -70°C.

Preparation of Experimental Samples:

Prepare phosphate buffered saline solution, Cat. #K205, by completely dissolving each packet into 1 liter dH₂O. Dilute test samples in phosphate buffered saline to minimize matrix effects, if required. User must determine appropriate dilutions for test samples.

Assay Procedure:

1. Allow all kit components to equilibrate to room temperature.
2. Dilute test specimens with phosphate buffered saline to minimize matrix effects, if required.
3. Add 20µL of test samples (blanks, calibrators, quality control samples, and test specimens) to wells of the microplate (#K401) as required by the user (see example plate set-up).
4. Immediately add 100µL of JWH-250 conjugate (#K402) to each well. Tap each side of the plate holder to ensure thorough mixing.
5. Incubate plate for 60 minutes at room temperature (20-25°C) with gentle agitation.
6. Wash the plate wells 5-times with 325µL of phosphate buffered saline using a multi-tip pipette or 4-times with an automated plate washer. Be careful that the pipette tips do not touch the well bottoms.
7. After washing, invert plate and gently tap the plate twice onto absorbent paper placed on the benchtop to remove residual liquid (not required if using an automated microplate washer).
8. Add 100µl TMB SUBSTRATE (#K203) to each well. Tap each side of plate holder to ensure thorough mixing.
9. Incubate at room temp for 30 min with gentle agitation, preferably in the dark or dim light. The wells will develop colorless to blue in color.
10. Add 100µL STOP SOLUTION (#K204) to each well. **CAUTION: MILDLY CAUSTIC SOLUTION! AVOID CONTACT WITH SKIN AND EYES!** The wells will immediately change to a yellow color.
11. Read OD at λ450nm in a microplate reader between 5 to 30 min after STOP SOLUTION addition. Be careful to eliminate any air bubbles in the wells before reading.

Data Analysis:

Calculate %OD/OD₀ from the OD450 values as follows:

$$\%OD/OD_0 = 100 * OD450 / OD450_{\text{blank}}$$

where OD450 is the average test sample value and OD450_{blank} is the average blank value.

A cut-off value for %OD/OD₀ can be used to determine the presence of JWH-250 and its metabolites in test samples. Recommended standards are as follows, however the user must determine appropriate values:

StdBlank: Buffer only (phosphate buffered saline).

StdCutoff: 5 ng/mL N-4-hydroxypentyl metabolite prepared in phosphate buffered saline.

QCpos: 100 ng/mL N-4-hydroxypentyl metabolite prepared in phosphate buffered saline.

In suspect samples, confirmation should be made using an alternative analytical method, for example LC-MS-MS.

Limitation on use:

This product is for research use only (RUO) and is not approved for therapeutic or diagnostic use. In all circumstances, the user must validate the method for suitability of their intended purpose.

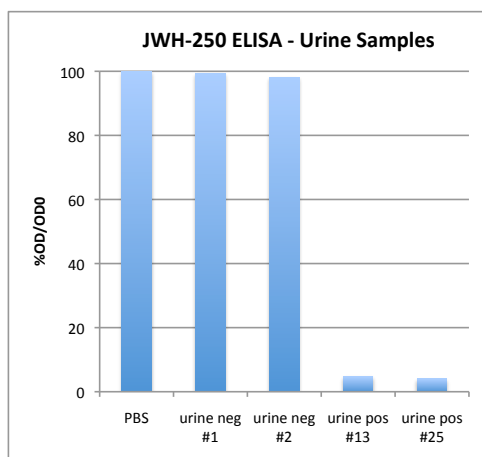


Cat. #4400 JWH-250 (K2/Spice) Synthetic Cannabinoid ELISA Assay Kit Drug and Metabolite Cross-Reactivity Relative to JWH-250-4-OH (5 ng/mL)

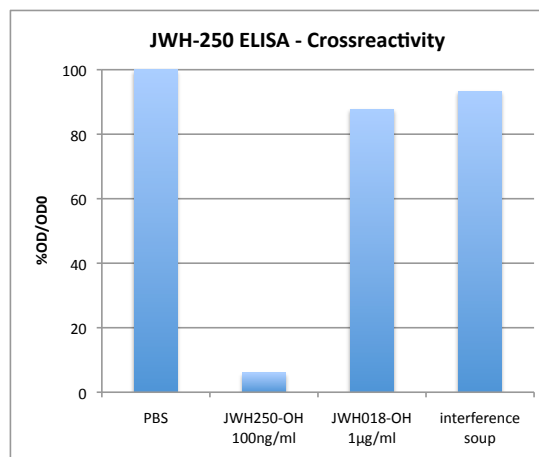
COMPOUND	Crossreactivity, %
JWH-250-4-OH (calibrator)	100
JWH-250-5-OH	50
JWH-250-N-pentanoic acid metab	50
JWH-250	12
AKB 48	<1
AM-1220	<1
JWH-018-N-5-OH-pentyl metab	<1
JWH-018-5-OH glucuronide	<1
JWH-018-6-OH-indole metab	<1
JWH-018-7-OH-indole metab	<1
JWH-022 C4 keto	<1
JWH-201	<1
JWH-203	<1
JWH-302	<1
RCS-8	<1
RCS-8 4-methoxy isomer	<1

Note: For additional cross-reactivity data see A. Arntson *et al.* (2013) *J. Analyt. Toxicol.* **37** 284.

Example Results:



Urine from negative and positive JWH-250 users were diluted 1/5 in PBS, then assayed according to the ELISA protocol.



JWH-250 hydroxy metabolite (100ng/ml), JWH-018 hydroxy metabolite (1µg/ml), and interference soup (nicotine, caffeine, etc.) were assayed according to the ELISA protocol.

