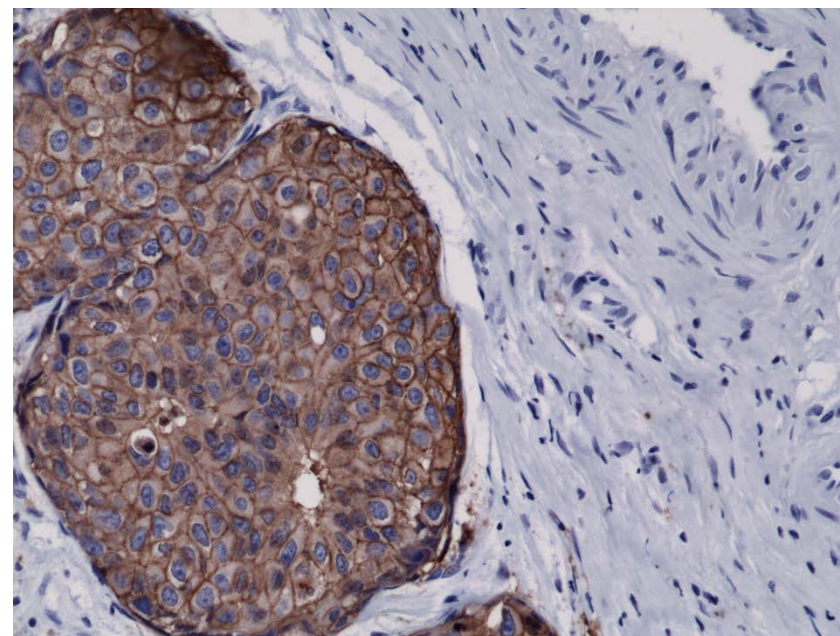
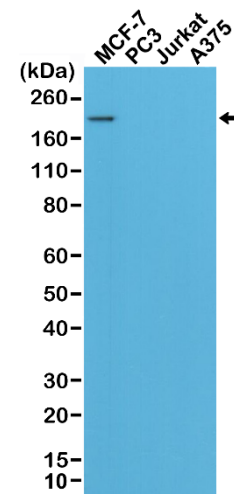


Certificate of Analysis

Product:	Rabbit Monoclonal Antibody Anti-HER2 (c-erbB-2) Rabbit Monoclonal Antibody, Clone RM228
Catalog No.:	31-1107-00
Lot No.:	
Clone:	RM228
Specificity:	This antibody reacts to Human c-erbB-2/HER-2. This antibody may also react to mouse or rat c-erbB-2/HER-2, as predicted by immunogen homology.
Application:	Immunohistochemistry, Western Blot
Immunogen:	A peptide corresponding to the C-terminus of Human c-erbB-2/HER-2
Purity:	Protein A affinity purified from an animal origin-free culture supernatant
Size:	31-1107-00-S: 0.1 mL 31-1107-00-R: 1.0 mL
Buffer:	50% Glycerol/PBS with 1% BSA and 0.09% sodium azide
Usage:	IHC: 1:100 dilution; WB: 1:1000 dilution.
Storage and Stability:	Stable for 1 Year at -20.0°C from date of receipt.
Country of Origin:	U.S.A.
Intended Use:	For Research Use Only Not for Diagnostic or Therapeutic Use



Immunohistochemical staining of formalin fixed and paraffin embedded human breast cancer tissue sections.



Western Blot of MCF-7, PC3, Jurkat, and A375 cell lysates using RM228, showed a band of Her2 expressed only in MCF-7 cells.