



11 Park Drive, Suite 12
Boston, MA 02215

Rabbit anti Mouse Metastin /KiSS-1 (Antigen-affinity purified)

ORDERING INFORMATION

Catalog Number:	mAP-0049
Size:	50 µg or 100 µg
Storage:	< -20 °C
Immunogen:	Metastin (1-52) / KiSS-1 (68-119)
Ig Type:	Rabbit IgG
Applications:	IHC

Background: KiSS-1 gene encodes metastin, also known as kisspeptin or KiSS-1 peptide, which binds to a G protein-coupled receptor GPR54. KiSS-1 is dominantly expressed in brain (e.g. anteroventral periventricular nucleus, AVPV arcuate nucleus, ARC), placenta, and pancreas, etc. Metastin plays an important role in regulating the GnRH secretion in brain and MMP-9 expression in placenta, which is associated with development of puberty and sex maturation (e.g. Idiopathic hypogonadotropic hypogonadism, IHH) as well as placentation (e.g. pre-eclampsia), respectively. Metastin was originally discovered as a tumor metastasis suppressor (e.g. melanoma, breast cancer).

Preparation: Produced in rabbits immunized with synthesized peptide (Ser - Ser - Pro - Cys - Pro - Pro - Val - Glu - Gly - Pro - Ala - Gly - Arg - Gln - Arg - Pro - Leu - Cys - Ala - Ser - Arg - Ser - Arg - Leu - Ile - Pro - Ala - Pro - Arg - Gly - Ala - Val - Leu - Val - Gln - Arg - Glu - Lys - Asp - Leu - Ser - Thr - Tyr - Asn - Trp - Asn - Ser - Phe - Gly - Leu - Arg - Tyr - NH₂).

Formulation and Storage: Rabbit anti-serum was firstly purified by Protein A affinity chromatography, and then by antigen-affinity column. Antigen purified IgG was lyophilized from a 0.2 µm filtered solution in phosphate-buffered saline (PBS). Lyophilized samples are stable for 2 years from date of receipt when stored at -70°C.

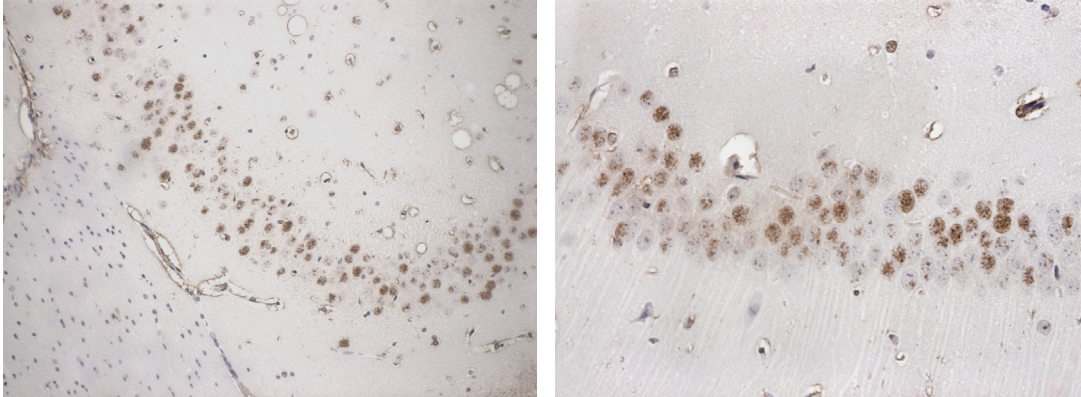
Reconstitution: Reconstitute the antibody with 100 µl sterile PBS and the final concentration is 500µg/ml. Reconstituted antibody can also be aliquoted and stored frozen at < -20 for at least for six months without detectable loss of activity. **Avoid repeated freeze-thaw cycles.**

Specificity: This antibody recognizes Mouse Metastin/KiSS-1 (peptide) using Dot blotting and direct ELISA. Cross reactivity to other species has not been tested.

Contact & Ordering Information: Angio-Proteomie, 11 Park Drive, Suite 12, Boston, MA 02215, USA. Fax: (480) 247-4337, angioproteomie@gmail.com

Applications:

- | | | |
|-------------------|-----|---------------|
| 1. IHC (Paraffin) | Yes | (1:100) |
| 2. Dot blotting: | Yes | (1:1000-5000) |
| 3. Direct ELISA | Yes | (1:2000-8000) |



Mouse brain tissue was stained with anti Mouse Metastin/KiSS-1 (Cat No mAP-0049).

REFERENCES

Ohtaki T, et al. Nature 2001 May 31;411(6837):613-7

Gottsch ML,, et al. Endocrinology. 2004 Sep;145(9):4073-7. Epub 2004 Jun 24

Horikoshi Y, et al. J Clin Endocrinol Metab 2003 Feb;88(2):914-9

Stafford LJ, Xia C, Ma W, Cai Y, Liu M. Cancer Res 2002 Oct 1;62(19):5399-404

Bilban M, et al. J Cell Sci. 2004 Mar 15;117(Pt 8):1319-28