

Monoclonal anti HA-Tag

ORDERING INFORMATION

Catalog Number:	tAP-0052
Size:	100 µg
Storage:	<-20 °C
Immunogen:	YPYDVPDYA (HA) synthetic peptide conjugated to KLH
Clone Name	HA.C5/C10
Ig Type:	Mouse IgG3
Purification:	Protein A affinity Purified
Application	Dot Blot, ELISA, IS, IP and WB

Preparation:

This antibody was produced from a hybridoma (mouse myeloma fused with spleen cells from a mouse immunized with purified YPYDVPDYA (HA) synthetic peptide conjugated to KLH.

Formulation and Storage:

Protein A affinity chromatography from mouse ascites fluid. The product was lyophilized from a 0.2 µm filtered solution in phosphate-buffered saline (PBS). Lyophilized samples are stable for 2 years from date of receipt when stored at -70°C.

Reconstitution:

Reconstitute the antibody with 100 µl sterile H₂O and the final concentration is 1000µg/ml. Reconstituted antibody can also be aliquoted and stored frozen at < -20 °C for at least for six months without detectable loss of activity. **Avoid repeated freeze-thaw cycles.**

Specificity:

Recognizes the N-terminal, C-terminal or internal HA- tagged fusion proteins

Applications:

This antibody is suitable for following applications: Dot Blot, ELISA, IS, IP and WB (1:1000-10,000)

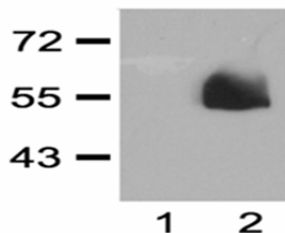


Fig. 1:1000 (1µg/mL) Ab dilution probed against HEK293 cells transfected with HA-tagged protein vector; untransfected (1) and transfected (2)

Optimal dilutions should be determined by each laboratory for each application.

The listed dilutions are for recommendation only and the final conditions should be optimized by the ender users!

This product is sold for Research Use Only !