

## Monoclonal anti V5-Tag

### ORDERING INFORMATION

Catalog Number:	tAP-0054
Size:	100 µg
Storage:	<-20 °C
Immunogen:	GKPIPPELLGLDST (V5) synthetic peptide conjugated to KLH
Clone Name	E10/V4RR
Ig Type:	Mouse IgG1
Purification:	Protein A affinity Purified
Application	Dot Blot, ELISA, IS, IP and WB

### **Preparation:**

This antibody was produced from a hybridoma (mouse myeloma fused with spleen cells from a mouse immunized with purified GKPIPPELLGLDST (V5) synthetic peptide conjugated to KLH .

### **Formulation and Storage:**

Protein A affinity chromatography from mouse ascites fluid. The product was lyophilized from a 0.2 µm filtered solution in phosphate-buffered saline (PBS). Lyophilized samples are stable for 2 years from date of receipt when stored at -70°C.

### **Reconstitution:**

Reconstitute the antibody with 100 µl sterile H<sub>2</sub>O and the final concentration is 1000µg/ml. Reconstituted antibody can also be aliquoted and stored frozen at < -20 °C for at least for six months without detectable loss of activity. **Avoid repeated freeze-thaw cycles.**

### **Specificity:**

Recognizes V5 (GKPIPPELLGLDST) tagged fusion proteins

### **Applications:**

This antibody is suitable for following applications: Dot Blot, ELISA, IS, IP and WB (1:1000-10,000)

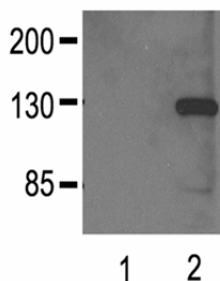


Fig. 1:000 (1µg/mL) Ab dilution probed against HEK293 cells transfected with V5-tagged protein vector; untransfected (1) and transfected (2)

*Optimal dilutions should be determined by each laboratory for each application.*

The listed dilutions are for recommendation only and the final conditions should be optimized by the ender users!

**This product is sold for Research Use Only !**