

## Monoclonal anti GFP-Tag

### ORDERING INFORMATION

Catalog Number:	tAP-0056
Size:	100 µg
Storage:	<-20 °C
Immunogen:	GFP from the jellyfish Aequorea Victoria N-terminal peptide-KLH conjugates
Clone Name	GF28R
Ig Type:	Mouse IgG1
Purification:	Protein A affinity Purified
Application	Dot Blot, ELISA, IS, IP and WB

### **Preparation:**

This antibody was produced from a hybridoma (mouse myeloma fused with spleen cells from a mouse immunized with purified GFP from the jellyfish Aequorea Victoria N-terminal peptide-KLH conjugates .

### **Formulation and Storage:**

Protein A affinity chromatography from mouse ascites fluid. The product was lyophilized from a 0.2 µm filtered solution in phosphate-buffered saline (PBS). Lyophilized samples are stable for 2 years from date of receipt when stored at -70°C.

### **Reconstitution:**

Reconstitute the antibody with 100 µl sterile H<sub>2</sub>O and the final concentration is 1000µg/ml. Reconstituted antibody can also be aliquoted and stored frozen at < -20 °C for at least for six months without detectable loss of activity. **Avoid repeated freeze-thaw cycles.**

### **Specificity:**

Recognizes native and denatured forms of GFP and its variants such as: EGFP, YFP, EYFP, and CFP

### **Applications:**

This antibody is suitable for following applications: Dot Blot, ELISA, IS, IP and WB (1:1000-10,000)

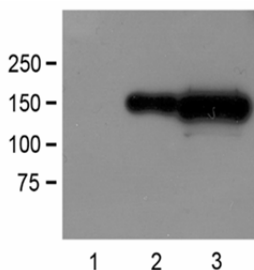


Fig. 1:1000 (1µg/mL) Ab dilution probed against HEK293 cells transfected with GFP-tagged protein vector: untransfected control (1), 1µg (2) and 10µg (3) of cell lysates used

*Optimal dilutions should be determined by each laboratory for each application.*

The listed dilutions are for recommendation only and the final conditions should be optimized by the ender users!

**This product is sold for Research Use Only !**