

Monoclonal anti RFP-Tag

ORDERING INFORMATION

Catalog Number:	tAP-0057
Size:	100 µg
Storage:	<-20 °C
Immunogen:	RFP from the Discosoma sea anemone N-terminal peptide-KLH conjugates
Clone Name	RF5R
Ig Type:	Mouse IgG1
Purification:	Protein A affinity Purified
Application	Dot Blot, ELISA, IS, IP and WB

Preparation:

This antibody was produced from a hybridoma (mouse myeloma fused with spleen cells from a mouse immunized with RFP from the Discosoma sea anemone N-terminal peptide-KLH conjugates conjugates .

Formulation and Storage:

Protein A affinity chromatography from mouse ascites fluid. The product was lyophilized from a 0.2 µm filtered solution in phosphate-buffered saline (PBS). Lyophilized samples are stable for 2 years from date of receipt when stored at -70°C.

Reconstitution:

Reconstitute the antibody with 100 µl sterile H₂O and the final concentration is 1000µg/ml. Reconstituted antibody can also be aliquoted and stored frozen at < -20 °C for at least for six months without detectable loss of activity. **Avoid repeated freeze-thaw cycles.**

Specificity:

Recognizes native and denatured forms of RFP and its variants: tag-RFP, turbo-RFP, DeRed, mCherry, mOrange, etc

Applications:

This antibody is suitable for following applications: Dot Blot, ELISA, IS, IP and WB (1:1000-10,000)

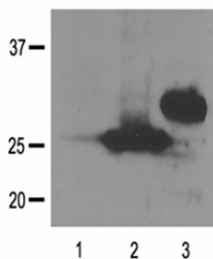


Fig. 1:1000 (1µg/mL) Ab dilution probed against HEK293 cells transfected with RFP-tagged protein vector; untransfected control (1), transfected with Turbo-RFP (2), and transfected with DeRed (3)

Optimal dilutions should be determined by each laboratory for each application.

The listed dilutions are for recommendation only and the final conditions should be optimized by the ender users!

This product is sold for Research Use Only !